



Beautifully maintained home in a quiet Quainton cul-de-sac featuring two elegant reception rooms, a modern kitchen, and a private garden. Offers four spacious bedrooms, including a luxury en-suite. Includes garage, ample parking, and premium finishes throughout. No Onward Chain!

Nestled in a highly sought-after and tranquil cul-de-sac in Quainton, this meticulously maintained and beautifully presented home offers the perfect blend of luxury, comfort, and practicality.

Step inside to discover two elegant reception rooms — ideal for entertaining or relaxing with family. Patio doors on both sides open onto a flat, well-established garden that offers privacy and peace — a true outdoor retreat. A convenient downstairs cloakroom adds to the home's practical layout.

The modern luxury kitchen is a standout feature, flooded with natural light and thoughtfully designed with stylish cabinetry, premium worktops, and ample space for dining. A separate laundry room includes built-in storage, a washer/dryer, and direct access to the rear garden.

Upstairs, you'll find four generously sized and well-appointed double bedrooms, including a spacious principal suite with an en-suite bathroom. A large landing leads to a beautifully finished family bathroom, completing the upper level.

Additional highlights include:

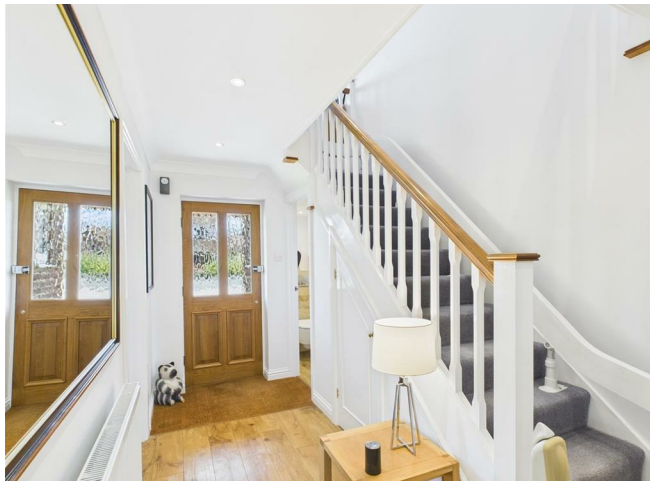
Recessed lighting throughout  
Double glazing

Integral garage with electric doors  
Block-paved driveway providing ample parking  
Warm, inviting interiors  
This is the ultimate home for those seeking luxury, space, and serenity in a prime location.  
Don't miss the opportunity to make it yours.  
No Onward Chain!





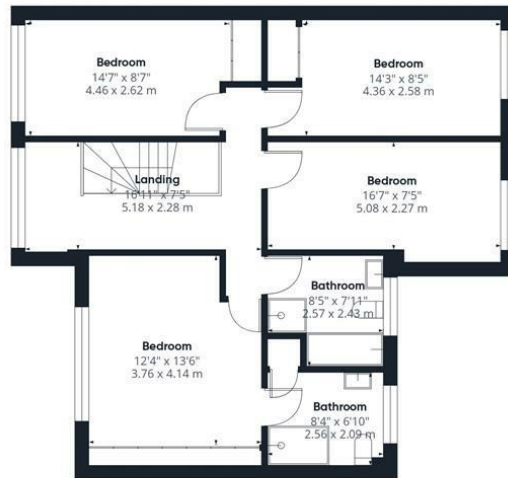
Peaceful Quainton cul-de-sac  
Two bright reception rooms  
Modern kitchen with dining space  
Separate utility with garden access  
Four double bedrooms  
En-suite to principal bedroom  
Stylish family bathroom  
Private, established garden  
Garage with electric doors  
Driveway with ample parking





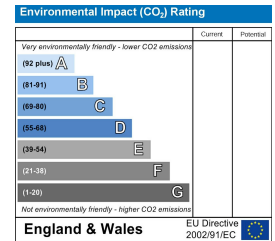
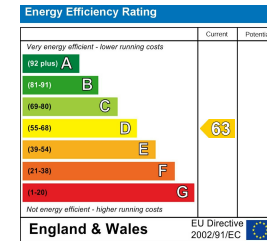


Ground Floor Building 1



Floor 1 Building 1

Approximate total area<sup>m</sup>  
1774 ft<sup>2</sup>  
164.8 m<sup>2</sup>



(1) Excluding balconies and terraces

Calculations reference the RICS IPMS 3C standard. Measurements are approximate and not to scale. This floor plan is intended for illustration only.

GIRAFFE360

